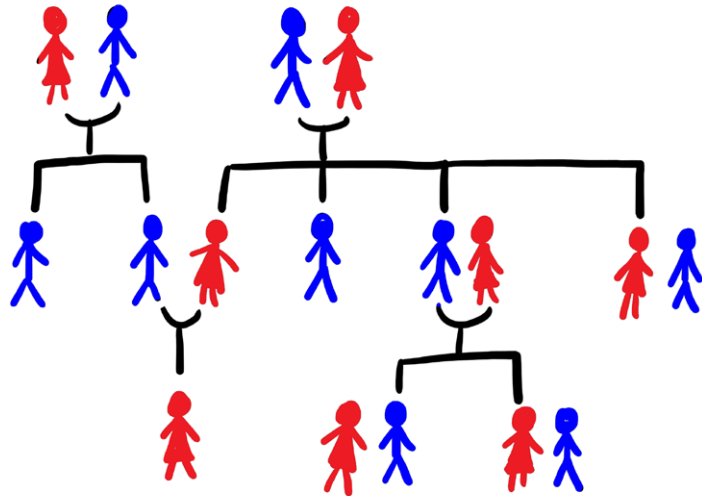


ETGAR Weekly Challenge

Shabbat Parshat Vayigash - Asara B'tevet
6th Tevet 5782 - 10th December 2021

Good Relations / Bad Relations

1. What relation was *Yitzchak* to *Yishmael*?
2. What relation was *Esav* to *Yosef*?
3. *Lot* was *Avraham*'s nephew, what was his relation to *Yitzchak*?



Parshah Discussion

...ולא-יכל יוסף להתאפק...
ויאמר יוסף אל-אחיו אני יוסף, העוד אבי חי;
“And *Yosef* could not control himself ... and he said
to his brothers, ‘I am *Yosef*. Is my father still alive?’ ”
(*Bereishit* 45:1,3)

- Why do you think that *Yosef*'s first question was about his father?
- What do you imagine the brothers were thinking when *Yosef* revealed himself?
- Have you ever been unable to control yourself and blurted something out?

Brainteaser

Identify the word or phrase:

mealsgrace