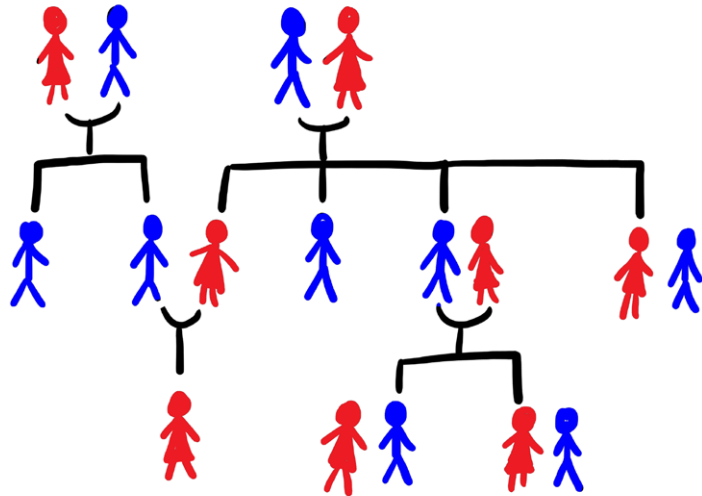


# ETGAR Weekly Challenge

Shabbat Parshat Vayigash - Asara B'tevet  
6<sup>th</sup> Tevet 5779 - 14<sup>th</sup> December 2018

## Good Relations / Bad Relations

1. What relation was *Yitzchak* to *Yishmael*?
2. What relation was *Esav* to *Yosef*?
3. *Lot* was *Avraham*'s nephew, what was his relation to *Yitzchak*?



## Parshah Discussion

...ולא-יכל יוסף להתאפק...  
ויאמר יוסף אל-אחיו אני יוסף, העוד אבי חי?  
“And *Yosef* could not control himself ... and he said  
to his brothers, ‘I am *Yosef*. Is my father still alive?’ ”  
(*Bereishit* 45:1,3)

- Why do you think that *Yosef*'s first question was about his father?
- What do you imagine the brothers were thinking when *Yosef* revealed himself?
- Have you ever been unable to control yourself and blurted something out?

## Brainteaser

Identify the word or phrase:

People People People  
People People People  
People People People  
People People People  
People People People